

MONCORVO CLOSE

K N I G H T S B R I D G E S W 7



A superbly positioned, wide terrace house opening directly onto communal gardens. Moncorvo Close is a quiet and private development of houses just to the north of Ennismore Gardens and adjacent to Kingston House South. Arranged over just four floors, number eight has been in the same ownership since 1974. It is very well maintained and benefits from planning consent to extend at rear ground floor level to create a very large kitchen/dining room. The garden backs directly onto the communal gardens of Kingston House North to which there is direct access. The property has a large integral garage and hard standing for two further cars. Planning permission has also been granted to landscape the communal areas and to install electric gates at the entrance of the close.

Accommodation

Drawing room, reception room, kitchen, dining room, master bedroom with en suite dressing room and bathroom, guest bedroom with en suite dressing room and bathroom, three further bedrooms, two further bathrooms (one ne suite), guest cloakroom, garage, off-street parking for further two cars, garden backing onto communal gardens

Terms

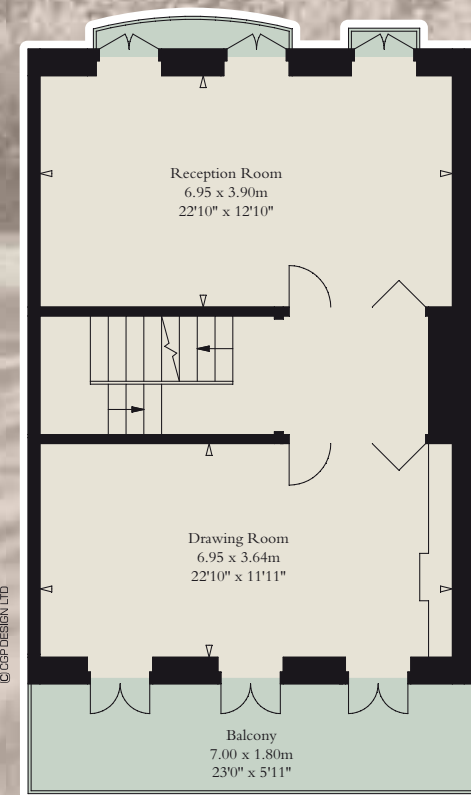
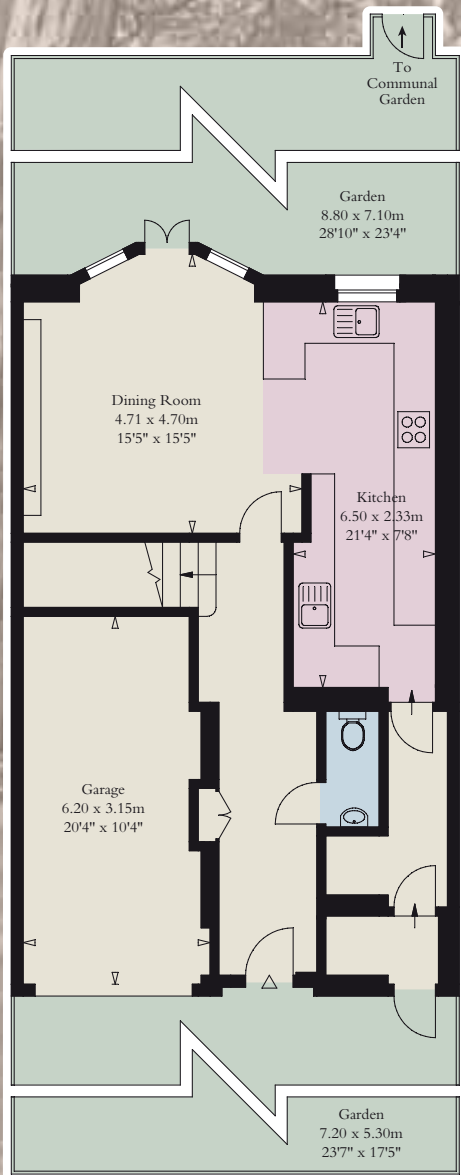
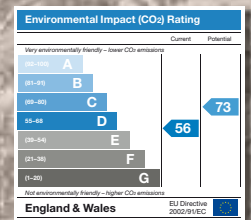
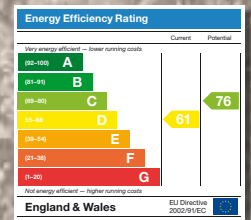
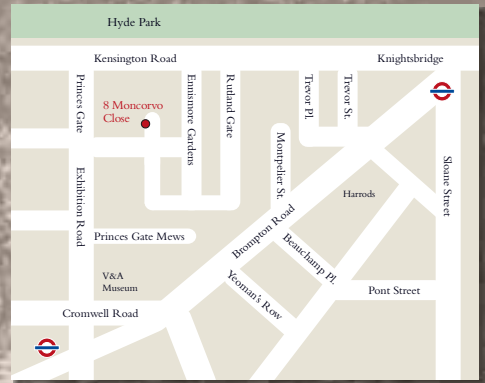
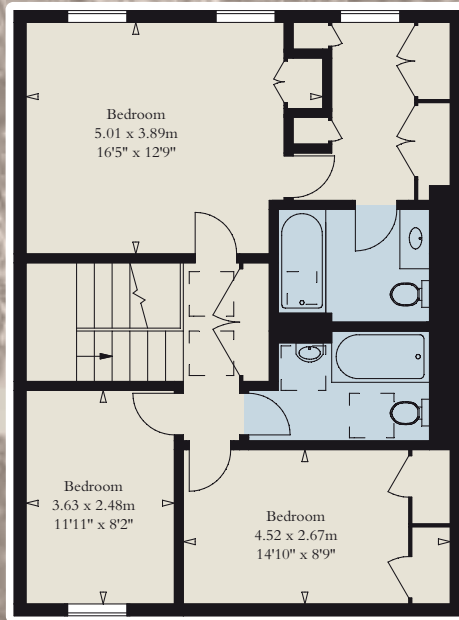
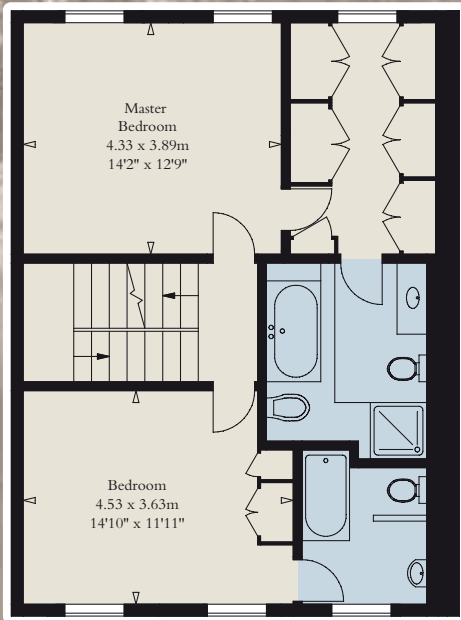
Tenure: Leasehold 978 years

Local Authority: City of Westminster

Price: On Application







Approximate Gross Internal Area
288 sq m / 3,100 sq ft
(including garage)



These particulars are for general information only and do not constitute any part of an offer or contract. All statements contained therein are made without responsibility on the part of the vendors or lessors and are not to be relied upon as statement or representation of fact. Intending purchasers or lessees must satisfy themselves, by inspection, or otherwise, as to the correctness of each of the statements or dimensions contained in these particulars. August 2010. CGP9277.MA08G-A. Photography & brochure by cgpdesign.com 020 7222 7222



wa.ellis
established 1868
174 Brompton Road London SW3 1HP
020 7306 1620
www.waellis.co.uk

188 Brompton Road
London SW3 1HQ
knightsbridge@savills.com
savills.co.uk **savills**
020 7581 5234